



Flowers by Moira



BESPOKE WEDDING FLORAL DESIGN

www.flowersbymoira.ie



W E L C O M E

Massive Congratulations on your engagement. We look forward to helping you plan the wedding of your dreams. your wedding is one of the most special unique and exciting days in your lives that create memories for you and your family to last a lifetime. each wedding day is as unique as each of our couples, so we work with you closely to bring to life your vision in flowers for your day.



The Flowers by Moira Process

We believe that every wedding tells a unique story. To ensure we provide the dedicated creative energy your day deserves, we have refined our process to be as seamless, transparent, and inspiring as possible. From securing your date to the final petal, here is how we bring your vision to life.

1. Secure Your Date

Your wedding date is a milestone. Once you submit an enquiry, we will tentatively “pencil” your date into our diary while we verify availability. To officially lock in Flowers by Moira and ensure your date is protected in our calendar, we require a €250 booking fee (fully deducted from your final balance) and signed Terms & Conditions.

Because our diary fills quickly, we recommend securing your date as early as possible to avoid disappointment.

2. The Creative Discovery

Once you are officially on our calendar, the excitement begins! If you have initial questions or wish to explore the possibilities before your deep-dive session, we can host a Discovery Call. We'll briefly discuss your color palette and venue requirements to ensure we are perfectly aligned with your aesthetic.

3. The Design Consultation

Approximately 3-4 months prior to your wedding, we will schedule your full Creative Consultation. This is the heart of the process. With your venue, dress, and wedding style now firmly in place, we will dive into your bespoke mood boards and refined design concepts.

Note on Pricing: We source our flowers fresh weekly through the floral auctions to ensure peak quality. Because market prices fluctuate, this 3-4 month window allows us to provide a bespoke proposal and final pricing that is both accurate and reflective of the current season. For future years, we recommend using our current guide as a baseline, anticipating a modest 10%-15% adjustment for inflation and market shifts.





4. Final Touches

Your wedding vision is a living thing. You can make final adjustments to your floral order up until one month before your big day, which is also when the final balance is due. From here, you can relax knowing every detail is in expert hands.

Ready to make it official?

We would love to be a part of your story. If you are ready to secure your date and begin this creative journey with us, please let us know. We will immediately send over your booking details and Terms & Conditions.

Email: weddings@flowersbymoira.ie

01 825 9948



Jenny Murphy | Award-Winning Lead Designer

At the heart of **Flowers by Moira** is a legacy of excellence that began in 1983.

I joined the business over 20 years ago, dedicated to evolving the craft my Mum Moira started and carrying her vision into a new era of floral artistry.

My work is defined by a global perspective and a commitment to the highest standards.



I am honoured to be a **Chelsea Flower Show Gold Medalist** and have exhibited my designs internationally at the **Singapore Garden Festival**.

As a Board member of the Institute of Flowers in Ireland and a Chapel Designer, I am deeply committed to the growth of our industry, having hosted international floral conferences here in Ireland and regularly attending global workshops to keep my skills at the cutting edge.

For me, wedding floristry is a deeply personal journey. It begins long before the first stem is cut; it starts with the time and effort we spend together, designing and dreaming.



From the intricate creation of your bridal bouquets to the final, meticulous finishing touches at your ceremony, I am there every step of the way.

“It is a true full-circle moment for me to see a wedding day come to completion—transforming our months of planning into a living, breathing reality.”

I thrive on this journey with my couples, ensuring that the flowers don't just decorate the room, but bring your unique story to life.





FAYE AND AIDAN

An eclectic riot of colour

Culmullen Church and Bellinter House were transformed with a bright & bold colour summer blooms. The vibrant tones set the scene for the fun atmosphere of the day.

A mix of coral charm peonies, scabiosa, craspeida delphiniums, crocosmia, achelia were the blooms of choice & all interspersed with various greens created natural unstructured designs.

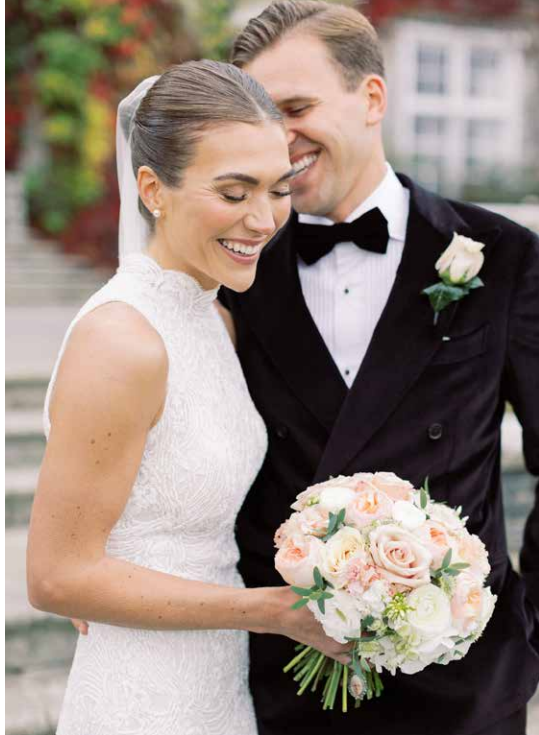


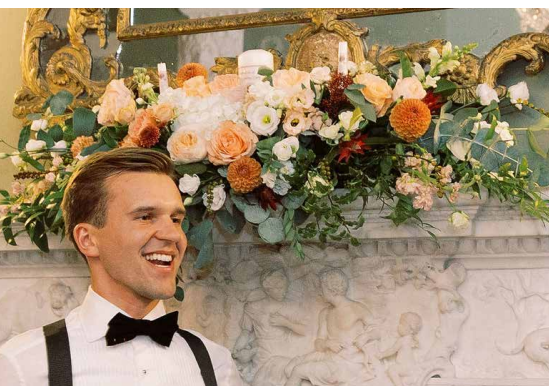
FAYE & AIDAN



KATIE AND JACK

Captured in the golden glow of October, Katie and Jack's floral vision brought a vibrant, sophisticated energy to **Luttrellstown Castle**. Embracing the warmth of the season with an opulent autumn color palette, the design featured a seamless transition from the traditional charm of Porterstown Church to the refined luxury of the castle. From the striking large-scale urns at the ceremony to the candlelit elegance of the Van Stry Ballroom, every arrangement was meticulously curated to celebrate the rich textures and tones of the season





B R E Z & E M M A

Bohemian Vibes at Bellinter House

Natural, relaxed and informal styling with an abundance of summer blooms in a palette of rich creams and blush tones were the order of the day for Brez & Emma's epic wedding. Dahlias, garden roses and honeysuckle all featured to create the fun and playful atmosphere of the day.



BREZ & EMMA





JENNY & TOBY

Classic Summer Beauty at Powerscourt Hotel

A classic and elegant vision in the
gorgeous setting of Wicklow.

Urns filled with summer blooms
adorned the church and the
repetition was dressed with elevated
designs to create an abundant
atmosphere.





JENNY & TOBY

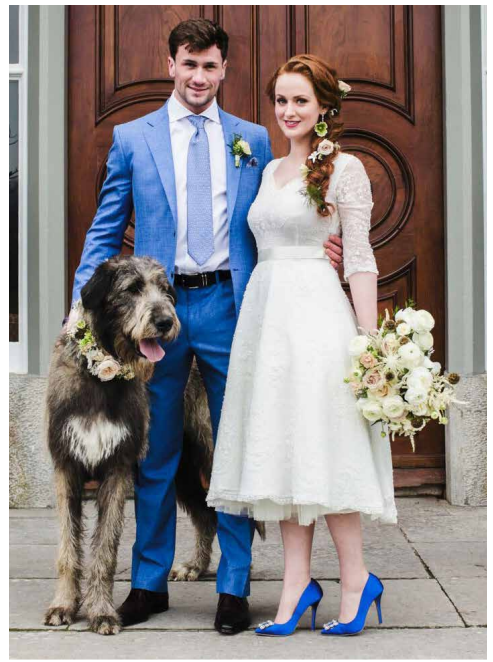


SLANE CASTLE

Creative Collaboration

We worked as part of a collaborative team on this creative styled shoot at Slane Castle. We showcased an array of designs to capture the regal setting with a contemporary feeling.





Two different looks were created. Paper tones in ivory and creams accented with soft beige tones and a more romantic and whimsical style with blush hues.



SLANE CASTLE





CIARA AND ASHLEY

An Enchanted Garden was the inspiration behind this décor, an abundance of foliage and ivory blooms with soft hints of blue transformed the church and Orangery at Tankardstown House.

Soft floating and ethereal feeling was created with flow and ease, featuring peony roses, trails of jasmine, quicksand roses, butterfly ranunculi and so much more.







M A R Y

Autumnal Berry tones with soft blushes in natural garden inspired designs created the perfect day at Rathsallagh. A statement entrance to the ceremony room greeted guests on this rainy day!

An abundance of season blooms including a rich mix of dahlias, roses, astilbe, astringia and lots of texture in foliage in green and deep toned foliage all created the perfect mood on this October Day.







SABINE & JUSTIN

Wild and rustic with an edge! Lots of texture, deep tones and soft highlights were in order for this celebration at Bellinter House.

Bouquets filled with lush green, textures in deeper tones and highlights of rich creams, varieties of choice included thistle, roses, astrantia, amaranthus, sedum and so much more.





SABINE & JUSTIN

LISA & CORMAC

**Gorgeous Autumnal Celebration
at The Mill House**

Deep burgundy tones dominated Lisa's bouquet and were accented by blush and nude hues for a cascade informal style bouquet. Lots of texture added with thistle and various green including jasmine and eucalyptus created her dream bouquet.



LISA & CORMAC





ROISIN AND SEAN

The Mill House, Slane is a venue infused with Character and history. The old mill's industrial feeling was softened with open blousey blooms in soft pastel tones.

Heavily scented flower varieties including hyacinths, stock and peony roses were chosen to add to the atmosphere in the space.








LOUISE & ROY

An intimate affair at The K Club

Although this was a small and intimate celebration, the focus on floral decor was evident. Urns filled with garden inspired blooms, a soft cascading bouquet including David Austin blush roses flowed through to elevated garden designs on tall vases to create height and drama in the drawing room setting for dining.



A bride with brown hair styled in a soft updo is smiling and looking over her shoulder. She is wearing a strapless, floor-length white lace wedding gown. She holds a large, cascading bouquet of flowers, featuring light pink and white roses, greenery, and ferns. The scene is set indoors, with a large window in the background showing a view of greenery outside. The lighting is soft and natural, coming from the window. A white lattice railing is visible in the foreground.

Muted pale tones lifted by soft foliage created a warm and delicate atmosphere.

TANKARDSTOWN HOUSE

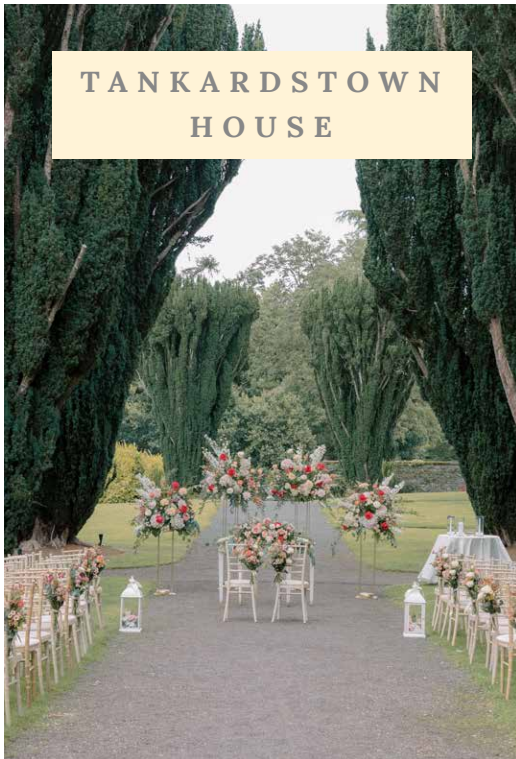
In the height of August, we transformed Tankardstown House into a vibrant, enchanted garden for a celebration that felt truly magical. The design featured a lush base of soft peaches and delicate blushes, electrified by bold pops of hot pink that echoed the peak of summer.

Within the reception space, we dressed the rustic beams in sprawling, organic florals to create an immersive woodland canopy.

A highlight of the day was the couple's dog, Toto, who stole hearts in a bespoke floral collar. Following a picturesque outdoor ceremony, the floral artistry was seamlessly transitioned to the dining tables, ensuring the romantic, garden-inspired atmosphere carried through to the very last toast.

Photography © Christina Brosnan





SLANE CASTLE

Chapel Designers conference

Experience the height of floral artistry at Slane Castle, where I had the privilege of hosting the Chapel Designers conference and leading a powerhouse team of Irish and international talent to redefine castle opulence. Together, we pushed the boundaries of traditional wedding decor, transforming this historic Irish landmark into an immersive, high-fashion floral experience. From the main entrance to the grandest reception rooms, every corner pulsed with a “wow factor” that honored the castle’s heritage while injecting modern luxury. We dressed the fireplaces in cascading, organic meadows and curated tablescapes that felt like a lush indoor forest, featuring soaring trees and compote bowls overflowing with premium, vibrant blooms. This installation wasn’t just about decoration; it was about the collective energy of a global design team creating a truly unforgettable, opulent masterpiece.



SLANE CASTLE



LEXI AND PETE

Set against the breathtaking backdrop
of **Luttrellstown Castle**,

Lexi and Pete's wedding was a
masterclass in modern romanticism.
The floral design centered on ethereal
clouds of babies breath, crafted to
create high-impact installations that
felt both timeless and contemporary.
From striking ceremony backdrops
to voluminous clouds suspended
within the reception, the delicate
white textures provided a dreamlike
atmosphere that perfectly
complemented the historic grandeur
of the venue.

Photography © Christina Brosnan



LEXI AND PETE





FLOWERS BY MOIRA

Main Street, Dunshauglin,
County Meath, Ireland
Tel: 00353 1 825 9948

Award Winning Flora Design
RHS Chelsea Gold Medal Winner
Chapel Designer
Floral Fundamental Ambassador
Good Florist Guide



www.flowersbymoira.ie